

# MID-ATLANTIC RHODODENDRON NEWS AND NOTES

A Publication of the Middle Atlantic Chapter of the American  
Rhododendron Society

Vol. XXX No.4

December 2004

## CALENDAR OF UPCOMING MAC MEETINGS

May 15–17, 2005

District Meeting Westminster, MD

Oct 21–23, 2005

Breaks Interstate Park, VA-KY

### Rhododendron Web Site Addresses:

American Rhododendron Society

<http://www.rhododendron.org/>

MAC Website **NEW!**

<http://www.macars.org/>

U VA Science & Engineering Libraries

<http://www.lib.virginia.edu/science/guides/s-rhodo.htm>

## FALL MAC MEETING, October 15-17, 2004, CHARLOTTESVILLE, VA

Fifty-nine MAC members attended the Fall Meeting in Charlottesville at the Old English Inn. On Friday evening we had a slide talk and show by Peter Hatch, director of gardens and grounds at Monticello. He gave an interesting historical presentation of the garden with illustrations and information about Thomas Jefferson.

George McLellan gave a presentation of the Species Study Group's summer field trip which included Gregory Bald and other areas.

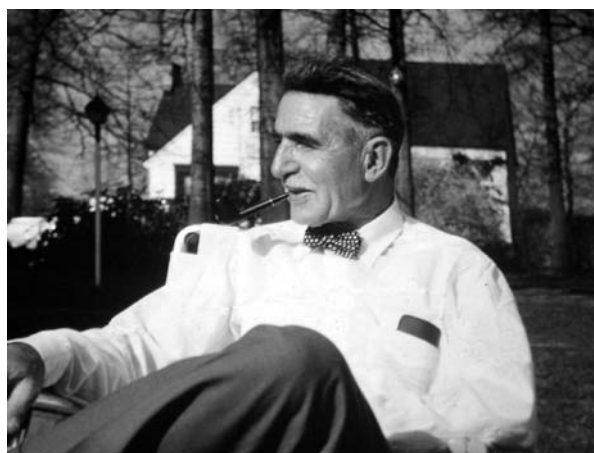
On Saturday we visited the Thomas Jefferson Center for Historic Plants, had lunch at Michie Tavern, and had a tour through the Thomas Jefferson Parkway through an arboretum of native trees and shrubs.

Don Voss, current District 9 Director, was the



Banquet speaker Donald Voss, District 9 Director. Photo by Walter Przypek.

speaker at the Saturday evening banquet. Don gave us a personal and interesting talk about his late father-in-law, Robert Gartrell, who hybridized the



Robert Gartrell, hybridizer of the Robin Hill azaleas. Printed with permission of Donald Voss.

Robin Hill azaleas. He showed slides of many of the plants hybridized by Robert Gartrell, and handed out a list of Robin Hill cultivars to accompany the talk.

Don Hyatt acted as auctioneer for our auction which proved to be very entertaining and lucrative.

A P4M sale took place with many *Kalmia* cultivars featured.

A tour of Grelen Farm Nursery took place on Sunday morning.

## THE MIDDLE ATLANTIC CHAPTER'S WEB

**SITE:** [www.macars.org](http://www.macars.org)

by Frank Pelurie

Well, it took a while to get to this point, and that was with a lot of help. Sandra McDonald acquired our web site address 'macars.org' almost 4 years ago. Then Don Hyatt pitched in, at Sandra's request, to develop our web site using the page layout design he developed for the Potomac Valley Chapter's web site, he added some of his own photography and articles he had written about MAC's meeting in Elkins, West

Virginia, and the field trips to Dolly Sods and other natural areas. For quite some time Don even arranged for the hosting of MAC's prototype web site. Plus, he sent Sandra a CD with all the files for the Potomac Valley Chapter's web site and the prototype MAC web site. Neither Sandra or I had any idea how to make a page for a web site let alone how to update and complete what Don had started. About two years ago I decided to take a class over the Internet on web site design. With the knowledge gained from the Internet course and that contained in the files on Don's CD, the MAC web site began to take shape about a year ago.

Fortunately at last year's winter board meeting while discussing who we should get to host our web site and the cost of hosting we got this wonderful offer from Sharon Collins. She offered to make the arrangements to have Bridgewater College host our web site at no cost. Since late this past summer the chapter's web site has been accessible online. Recently, some of the pages have been updated to reflect current schedules and contact information, and a few pages have been added in a section that I have for the time being named 'Chapter Manual.' It contains both information that is important to chapter board members, such as the Chapters Bylaws and Policies of the Board as well as some chapter information of historical interest. You can find the Chapter Manual by clicking on the Chapter link on the left side of the screen, scrolling to the very bottom of that page, and clicking on Chapter Manual. Once the Chapter Manual page loads you will have the option of viewing the following; ARS/MAC Awards, MAC Bylaws, MAC Founding Members, MAC Policies of the Board, and MAC Presidents.

For those of you who have access to the Internet, check over the Chapter's web site. If you see any errors, or have thoughts about what you would like to see on the web site send me an email at: franklin.pelurie@worldnet.att.net .

**NOTE FROM DOUG JOLLEY IN RESPONSE TO OUR INQUIRY AFTER THE JOLLEYS' RECENT ACCIDENT**

Davetta and I were on our way to work the morning of Tuesday, November 9th and collided with a vehicle coming around a curve mostly in our lane. My airbag deployed and though I had no bodily injuries, my lower jaw received the impact.

I ended up losing three teeth below and one above. Initially, the oral surgeon anticipated grafting and other procedures to restore my lower lip which sustained much damage and was lacerated clear through. We followed his post surgery instructions,



Doug Jolley and Norma Brown at the Thomas Jefferson Center for Historic Plants. Photo by S. McDonald.

and he and I for that matter were astounded at the healing which has occurred and hopefully no more soft tissue work will be necessary! We will have to wait four months though before deciding what to do in replacing the missing dentition.

Davetta had a sore knee and of course was sore all over after the accident. There was no airbag on her side.

Davetta and I have added Saturdays to make up for nine or ten days of missed appointments but hopefully we will be caught up by winter board meeting time. We are mostly recovered and back to normal work and activities.

**WHAT'S IN A NAME? By David Lay**

In the September 2004 newsletter Jane McKay said I had given her years ago an unusual azalea with bright red stamens but no petals called *R. kaempferi* var. *augustisectum*. It is not. It is *R. kaempferi* f.

*kinshibe*, as was the plant auctioned at last spring's meeting.

When I had the nursery I propagated the plant and sold it as "augustisectum" because Malcolm Clark and I thought that is what it was when we came across it in the 1980s, (incidentally, there is a typo on page 120 of Galle's book. It should be "angustisectum" not "augustisectum".) There is a nice *R. kaempferi* f. *kinshibe* at the National Arboretum. It is identical in size, leaf and flower with the old plant near our front door. Barbara Bullock the curator of Azaleas in Washington confirmed that the name should be *R. kaempferi* f. *kinshibe* and Jane McKay has now changed the label of the plant I gave her!

#### **BRONZE MEDAL AWARD CITATION:**

The Middle Atlantic Chapter of the American Rhododendron Society presents to Franklin B. Pelurie this Bronze Medal Award in recognition of his many contributions to our chapter over many years. He was chapter president from May 2001 to May 2003 and is now Alternate District IX Director.

He has planned meetings in Blacksburg and Roanoke, Virginia, and Bluefield, Elkins and Lewisburg, West Virginia. He has raised many seedlings and cuttings for the MAC Plants for Members program and for the Seedling Sales and for District and Regional ARS meetings.

He is the web master for the MAC Website and is primarily responsible for getting the site online.

He has donated a collection of Glenn Dale Azaleas from the Glenn Dale project to the James Madison University Arboretum. He has contributed to West Virginia Master Gardeners programs as well.

For this we present this Bronze Medal, our chapter's highest honor.

Signed Jeanne M. Hammer, President, October 16, 2004, Charlottesville, Virginia.

#### **CERTIFICATE OF APPRECIATION CITATION:**

The Middle Atlantic Chapter of the American Rhododendron Society presents to George Keen McLellan this Certificate of Appreciation in recognition of his continuing leadership in the MAC Species Study Group and in particular for his planning and organization on its many tours persistently seeking out and photographing in their native habitats all of our eastern native azalea

species, major hybrid swarms, and outstanding specimens.

In addition George and his cohorts have made many followup trips to collect seed and to further document locations of select plants and areas.

These trips have necessitated much time in planning, organizing, and driving great distances up and down the east coast from the Atlantic coastline to the Allegheny, Blue Ridge and Smoky Mountains and other locations in the Southeastern U.S. where native azaleas grow in the wild. We look forward to further adventures, reports, and photographs from George and our other involved members.

Signed: Jeanne Hammer, President, October 16, 2004, Charlottesville, Virginia.

#### **AWARD OF MERIT CITATION:**

The Middle Atlantic Chapter of the American Rhododendron Society presents to John B. Buschmann this Award of Merit. John B. Buschmann has been an active member for many years, serving on the Board of Directors for many of those years, always willing to use his wisdom, experience, talents, abilities and resources for the benefit of our Chapter. He was willing to use his truck to pick up and deliver member-donated plants from across the state to the MAC planting at Louis Ginter Botanical Garden. When we started to initiate interest in *Rhododendron* species, he broke the ice with a humorous narration of an ARS slide show on species. He initiated mini-meetings with how-to demonstrations at his garden. He often made both practical and humorous comments and impromptu speeches at meetings, always making constructive points. He has been generous in hosting hospitality suites at meetings and in many other ways. His continuing warm fellowship will always be appreciated.

We, therefore, present John Buschmann with this commemorative cup, the ARS Award of Merit for his long standing contributions to the chapter's growth and operations.

Signed: Jeanne M. Hammer, President, October 16, 2004, Charlottesville, Virginia.

#### **FROM THE MIDDLE OF MAC** by Jane McKay

It's early December and surprisingly the second day of sunshine. It seems this whole fall season has been overcast or raining. The large trees here, mostly oaks, beech and hickory lacked the beautiful fall

color of other years. The dogwoods though were beautiful. The azaleas, evergreen and deciduous, along with some of the lepidote rhododendrons are still in what I call “The Second Season”. Two lepidotes, *R. ‘Lynne Robbins Steinman’* and *R. ‘Weston’s Pink Diamond’* have been gorgeous for weeks with the leaves turning shades of pink, apricot, peach, orange and everything in between. We actually enjoy these plants more in the fall than in the spring as we usually have a late frost just as they come into bloom.



Jane McKay

The evergreen azalea spring leaves (formed at or just after bloom are larger and thinner textured than the more permanent and smaller summer leaves) have turned many colors from burgundy to yellow before falling. The only deciduous azalea still showing pink-colored leaves is *R. austrinum*; all the others were lovely a few weeks ago. As I walk around the garden I try to remove all the fallen tree leaves from the azaleas to prevent the centers from dying out.

Our tree man finally arrived in October and removed the trees damaged in the spring. He also straightened up the uprooted stump that my favorite *R. arborescens* is on. He managed to pull the stump almost back into its original hole. It is still above ground approximately six to eight inches but may settle down. Most important *R. arborescens* is upright and looking good.

Now let’s get down to business. As your membership chairman I am disappointed that so many of you have not yet renewed. I will list the names. **(If you renewed direct to the Executive Director Laura Grant during November, I have not yet been notified)** D&R Anderton, R. Brohawn, P. Cosby, J. Dobson, B. Freeman, M. Griffin, E&B Hager, D.L Halley, S. Harman, B. Kaelin, B. Kennel, Lewis Ginter Botanical Garden., J. Marshall, M/M L

Nachman, M. Perry, M. Russ, P&B Sarsfield, M. Simpson, James Smith, D&J Strode, D. Wheeler and T. Zakin.

Happy and Healthy Holidays to all.



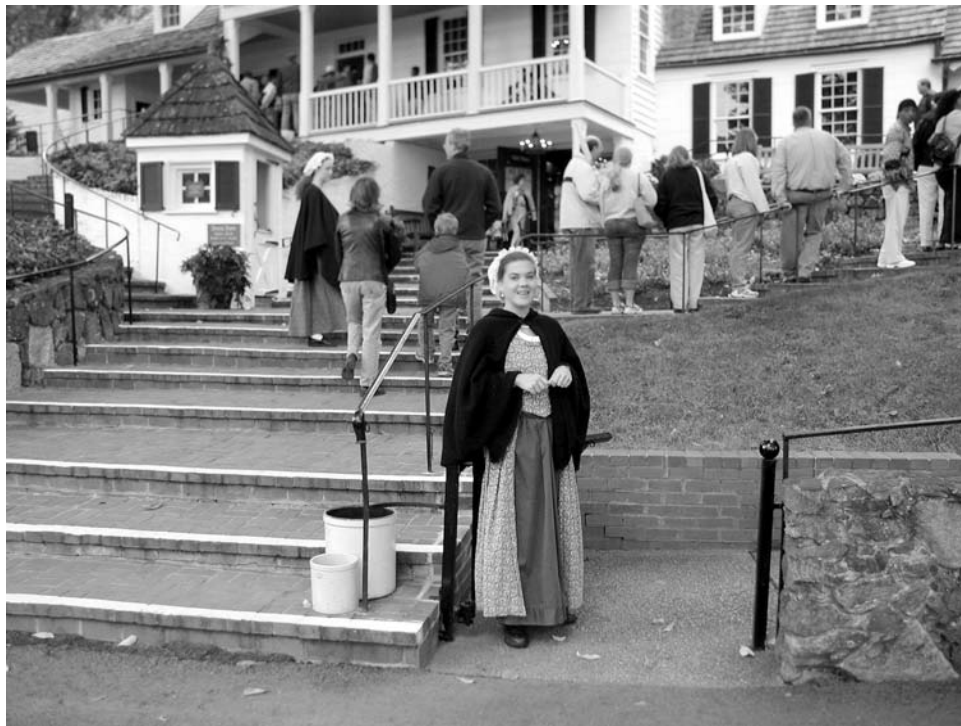
*R. makinoi*. Photo by W. Przypek.



*R. racemosum*. Photo by W. Przypek.



Sybil Przypek and Harry Wise talking a break outside the English Inn. Photo by W. Przypek.



A welcome for MAC members at Michie Tavern. Photo by W. Przypek.



Ray and Alice Doggett checking out their plants. Photo by W. Przypek.



Ron Brown and Bill Constable at Thomas Jefferson Center for Historic Plants. Photo by W. Bedwell.



Front to back: Don Voss, Jeanne Hammer, Ken McDonald. Photo by W. Przypek.





David Sauer and Don Hyatt. Photo by W. Przypek.



Ellen & J.R. Lockerman, Doug Jolley, and Olivia Singleton at Thomas Jefferson Center for Historic Plants. Photo by S. McDonald.



Kathy Constable at Saturday dinner. Photo by W. Przypek.





George McLellan receiving Certificate of Appreciation from Jeanne Hammer. Photo by S. McDonald



Frank Pelurie receiving Bronze Medal Award from Jeanne Hammer. Photo by S. McDonald.



John Buschmann receiving Award of Merit from Ken McDonald. Photo by S. McDonald.



MAC members touring Thomas Jefferson Center for Historic Plants. Photo by Bill Bedwell.



Bill Constable with Best-In-Show 'Brittany'. Photo by S. McDonald.



MAC members getting ready to hike Thomas Jefferson Parkway. Photo by S. McDonald.