

# MID-ATLANTIC RHODODENDRON NEWS AND NOTES

A Publication of the Middle Atlantic Chapter of the American  
Rhododendron Society

Vol. XLIV No. 4

December 2017

## CALENDAR OF UPCOMING MEETINGS

May 21-26, 2018

ARS Conference, Bremen, Germany

### Rhododendron website addresses:

<b>American Rhododendron Society</b>	<a href="http://www.rhododendron.org/">http://www.rhododendron.org/</a>
<b>ARS Store Order from Amazon thru this site</b>	<a href="http://arsstore.org/">http://arsstore.org/</a>
<b>MAC Website (UPDATED REGULARLY)</b>	<a href="http://www.macars.org/">http://www.macars.org/</a>
<b>UVA Special Collections</b>	<a href="http://www.lib.virginia.edu/small/">http://www.lib.virginia.edu/small/</a>
<b>Old Quarterly Bulletins &amp; JARS</b>	<a href="http://scholar.lib.vt.edu/ejournals/JARS/">http://scholar.lib.vt.edu/ejournals/JARS/</a>
<b>Rhododendron Blog</b>	<a href="http://www.rhododendron.org/blog/">www.rhododendron.org/blog/</a>
<b>Friends of the National Arboretum</b>	<a href="http://savetheazaleas.org/">http://savetheazaleas.org/</a>
<b>FONA's Save the Azaleas and Boxwood site</b>	

### MAC OCTOBER 20-22 MEETING RECAP

MAC members enjoyed an exceptionally good meeting at the Hilton Garden Inn-Airport near Richmond. The attendance total was 60 with 38 being MAC members. The facilities and food were very good, the speakers were exceptional, and the auction, plant sale, foliage show and book sale were all successful.

On Friday evening our reception and light meal were followed by the Ken Webb, our Western Vice President showing three brief presentations. He

showed slides of his lovely garden in Victoria, B.C., followed by propagation methods with his special propagation boxes, then a review of what people who are



Barbara Bullock

going to the Conference in Bremen, Germany, next spring will have the opportunity to see and do.

On Saturday morning our first speaker was

Barbara Bullock from the U.S. National Arboretum who gave us an update on the Glenn Dale Azalea Collection which had undergone a rejuvenation process a few years ago.



Joe Brusco

Also there is an eagle pair

nesting in the area requiring an area to be closed off for several months although some work can go on nearby.

Joe Brusco of Hopkinton, Massachusetts, gave a talk about "Hybridizing for Foliage." He had photos of rhododendrons with colorful foliage, good indumentum, large leaves, etc. Following that talk was a talk by Richard A Flavell, Ph.D, about hybridizing, this time for large leaf rhododendrons. Dr. Flavell is Sterling Professor of Immunobiology at Yale University School of Medicine. Dr. Flavell lives



Richard Flavell

in Connecticut, but has a second home in Oregon where he can grow many rhododendrons.



Ron Rabideau

After lunch, talks continued with a presentation by Ron Rabideau formerly of Rare Find Nursery, whose talk was “Rhododendron Species for the Middle Atlantic Region.” He told about species that should grow in our area. Many people do not



MAC President and Meeting Chairman Jeanne Hammer

have very good luck with species so it is good to know what ones do best. The final afternoon talk was by Dale Berrong, a new member of MAC. Dale’s talk was “Propagating Japanese Maples by Grafting.” Dale told us tweaks about grafting that he has worked out for himself after trying the usual commercial procedures that some nurseries use.

After the banquet buffet, Dr. Steve Krebs of the Holden Arboretum’s David G. Leach Research Station in Madison, Ohio, and who is now the new Eastern Vice President of ARS talked about “The Holden Arboretum and Leach Hybrids.”



Plant Sale- P4M



Jeanne Hammer and speaker Dr. Steve Krebs



Book Sale



A few foliage show entries

**DISTRICT DIRECTOR'S REPORT FROM ARS BOARD MEETING, October 20, 2017, RICHMOND, VA** by Director 9 Director William Meyers 2nd

The ARS is now on a sound financial footing, however, it's critical to grow membership.

Membership is down somewhat. Thanks to our Ann Mangels and Bill Mangels, Dave Banks, Sam Burd and others, expenses are down, too.

June Walsh from Eureka, California, has agreed to head up the ARS Membership Committee. All Chapters are asked to come up with recommendations to increase membership and are encouraged to bring on new members themselves. District Directors are to contact their member chapters to solicit suggestions and to have their membership chairs contact her. PR and publicity is key and all chapters need to do more.

The Tappan Zee Chapter is folding due to some recent deaths of chapter members and attrition, however, the big news is that Australia wants to join the ARS as a chapter. This is being looked at by the Board. We already have chapters in Denmark, Finland, Scotland, Canada, etc.

Juliana S. Medeiros who is heading the joint Research Foundation will be publishing her first article about her research in the Spring issue of the Journal.

Sonja Nelson is retiring as editor of the Journal and the Board is looking for a replacement by December. We already have two well qualified replacements being considered.

Bill Mangels reported the Endowment has been growing. Last year it awarded \$6,850 in grants and there is \$10,000 budgeted for grants to be made in 2018.

Following the untimely death of Kathy Van Veen, the good news is that Van Veen Nursery will be continuing as a non-profit Heritage Garden with the property being placed under a formal conservation easement. As such they will continue rooting and selling cuttings as in the past, as Van Veen Nurseries, Inc., thanks to Mike Stewart and many others.

Over 5.6 percent of purchases now goes directly to the ARS when you shop online through the ARS Store site. Just go to Amazon.ARSStore.org, Target.ARSStore.org or Walmart.ARSStore.org. You can also use Amazon Prime, but **Do Not Use "Amazon Smile"**.

The 2018 Convention in Bremen, with its pre-tours and post tours is filling up. It's expected to be fantastic with lots of tours of incredible public and private gardens planned so if you have any interest go online to see what the program and schedule and related costs are and get your reservation in.

The 2018 Fall Eastern Regional meeting will be held in Chattanooga, TN, and the 2019 ARS National Convention will be held May 16-19, just outside Philadelphia at the Desmond Hotel in Malvern, PA, about 6-8 miles west of Valley Forge.

### **IN THE CROZET GARDEN** by Lloyd Willis

On Sunday night, October 29, 2017, a wind storm hit Crozet and the surrounding area. Several trees in the area were down. One block north of us at least one large tree fell bringing down three electric poles and blocking Route 240. It took almost 23 hours



Lloyd Willis

before power was restored to some areas of Crozet including us. Since we had no trees down, we felt very lucky. At 8 a.m. Monday, October 30, I told my helper that I was sure if we spent about fifteen minutes picking up limbs, we could get the job done. We worked from 8 a.m. to 11 a.m., did three rounded pickup loads and did get most of the job done. The next day Margaret pointed out another half pickup load we had missed.

We currently (November 10, 2017) have several treats in our front yard. There is a single large sugar maple which when you walk underneath and look up appears to have a black trunk and every leaf a bright yellow. It is striking even on a cloudy day. There are three dogwoods with leaves having turned shades of pinkish orange and maroon. There are five small weeping Japanese maples in a row each with a different fall color, a different width, and a different height. Think a stair step pattern. Then there are the upright Japanese maples scattered around that are varying shades of yellow, orange, and green. The evergreen azaleas, the rhododendrons, and the boxwoods contrast with shades of green. We have pathways around our house that we usually travel once a day. We are enjoying the fall colors. Hope you are too.

So where is the humor in this article? About three months ago, one of our sons-in-law stated, "If you have any extra plants, I could use three in

front of our house." He repeated the statement about two months ago. At that point there were eight plants at the front of the house— three came with the house and five were ones we had previously provided. I told the son-in-law and our younger daughter that if I had permission to re-landscape the front of their house, I would provide the plants, labor, and mulch as a gift. I told myself that I could move their plants around, remove the three plants that came with the house, add plants from our nursery beds, pick up sale plants, and in one afternoon finish the project for under \$100.

What happened? A helper and I removed the three plants that came with the house to the limb pile near our house. The five other plants were removed and planted in their back yard. The plant beds across the front of their house were expanded with azaleas, boxwoods, and small Japanese maples. The front yard then looked so nice that we decided to landscape the east side of yard. Then of course the back had to be redone with a pattern similar to the front but with the addition of some rhododendrons in the shady areas. The west side of the house is used for storage and we did not do any work there. My helper and I did this project over five consecutive Monday's. We worked a total of a mere 59 hours and installed 91 plants at a total cost that was carefully hidden from the son-in-law and younger daughter.

### **WINDBEAM WAY WANDERINGS** by Doug Jolley

A mild autumn followed a terrific spring and summer here in central West Virginia. Only on November 11 did we harvest our last vegetables and take them inside for further ripening.



Doug Jolley

With a bit of a dry September and no frost approaching temperatures through October, the foliage both in the garden and on surrounding hillsides was simply dull at best. Many of the leaves of both trees and shrubs here in the garden turned muted colors and over a period of several weeks fluttered to the ground. Twenty-some degree nights arrived only well into

November. Finally, as Thanksgiving approaches, leaf raking and composting can begin in earnest.

the freshly pruned twigs, I put several branches in a large vase and placed them beside one of our

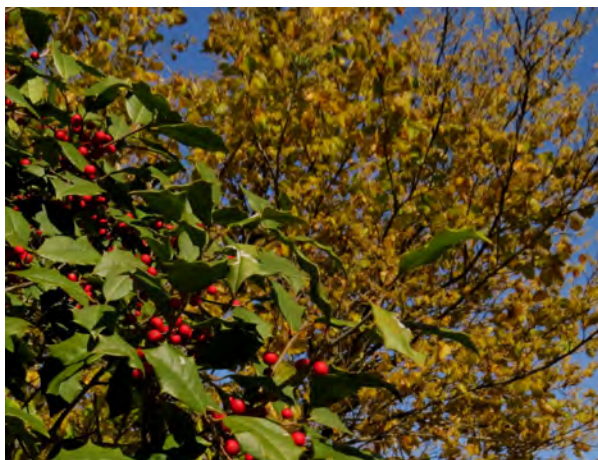


'Girard's Rose' and 'Cornell Pink'. Photo by Doug Jolley.



'Sparkleberry' holly. Photo by Doug Jolley.

Sparkleberries. The resulting berry set was outstanding.



American Holly and Witch Hazel. Photo by Doug Jolley.



Witch Hazel. Photo by Doug Jolley.

Rhododendrons and azaleas both are heavily budded and waiting on spring. Seed has largely been sparse both here and in some native populations that I have visited. American holly and deciduous holly are heavily laden with berry crops. In May, a male deciduous holly, 'Apollo', was pruned at flowering time. Rather than discard

In late October, I attended an interstate inspection society meeting. The meeting was hosted by the Maryland Department of Agriculture. A day of tours in the College Park, Maryland area included the United States National Arboretum South Farm nursery and plant breeding facility. Our tour was led by Arboretum Director Dr.

Richard Olsen. He gave our group insights into some of the Arboretum's plant breeding efforts and pointed out soon to be introduced ornamentals. In casual conversation with him, I found that he is well aware of the azalea collections and issues surrounding them. I feel encouraged that he will keep their best interests in mind.



Dr. Richard Olsen, Director of the U.S. National Arboretum. Photo by Doug Jolley.

Finally, we experienced very little fall bloom among our rhododendrons this season. With copious holly berries brightening the landscape, the complementary blooming shrub is our native witch hazel (*Hamamelis virginiana*). The witch hazel with its gold leaves and branches laden with yellow flowers provides quite a back drop for American Holly and deciduous Holly alike. Stay tuned for winter!

**KUDOS TO JEANNE HAMMER AND MAC**

From:

Date: Mon, Oct 23, 2017 at 12:37 PM

Subject: ARS BOD meeting

To:

Dear Jeanne --

Thank you and the Middle Atlantic Chapter for hosting our meeting last week. Everything was so well organized and nicely run. The hotel staff did an excellent job with their helpfulness and patience! Food was great! Rooms were well taken care of. And everyone seemed very friendly and cordial. AND we couldn't have asked for better weather.

I'm sure we may have put you out of your usual meeting arrangement, but we appreciate that you were able to work us into your planning. The speakers were excellent and most we hadn't heard before. That's one of the nice things about your meetings -- you get interesting speakers as well as interesting members of MAC.

You did a wonderful job and were usually there if anything needed clarification. That was appreciated. I heard nothing but praise for your efforts and the conference was a real plus.

Thank you and all the MAC people who helped make is a super weekend! The ARS enjoyed itself again with your hospitality.

Best wishes and hope to see you again soon.

Ann

---

From: Bruce Feller

Date: Sun, Oct 22, 2017 at 9:54 AM

Subject: Southern Hospitality

To:

Jeanne -

To you and all of the other members of MAC who helped to provide such a wonderful experience over the last several days for all of us lucky enough to attend, please accept our thanks and approbation. The Society Board especially owes a debt of gratitude for your accommodation of our Board Meeting and its seamless incorporation within the event, not to mention the warm welcome and sense of inclusion extended to our group throughout the Conference.

As long standing members of MAC this came as no revelation, we've come to expect and look forward to that reception whenever we're "in town". If memory serves, this is the second time that the Chapter has "pulled our bacon out of the fire". Several years ago you accommodated our

Board Meeting as an adjunct to your regular Fall weekend event. On behalf of the Board and the Society management team please again, accept our expression of appreciation. Please feel free to share this message with the entire membership who, with Southern grace and charm uphold the reality of Southern hospitality.

Bruce  
Georgia Cracker - Valdosta, GA

---

### WELCOME TO NEW MEMBERS

Adam Holmes, Troy, VA  
22974  
Christian Pridemore, Huntington,  
WV 25701

### PHOTOS FOR NEWSLETTER by S.McDonald

MAC member Walter Przypek hasn't been coming to many meetings these days since Sybil passed away. Walter used to take lots of photos at our meetings and send them to me which was very helpful to me in putting together the newsletter. From time to time a few members do submit photos especially if I ask ahead of time.



October 2015 meeting in Glen Allen, VA. Walt Przypek and Phyllis Rittman. Photo by Dave Banks

I do try to take photos of our meeting activities, but often I get so involved in what is happening that I forget to take photos.



**Remember all photos can be seen in color and ENLARGED at MACARS.ORG. Click on Newsletter on left panel.**

### LETTER FROM UNITED STATES DEPARTMENT OF THE INTERIOR, NATIONAL PARK SERVICE, GREAT SMOKY MOUNTAINS NATIONAL PARK, GATLINBURG, TENNESSEE, 37738

To Ms. Deborah D. Sauer, Treasurer  
Middle Atlantic Chapter,  
American Rhododendron Society  
August 2, 2017

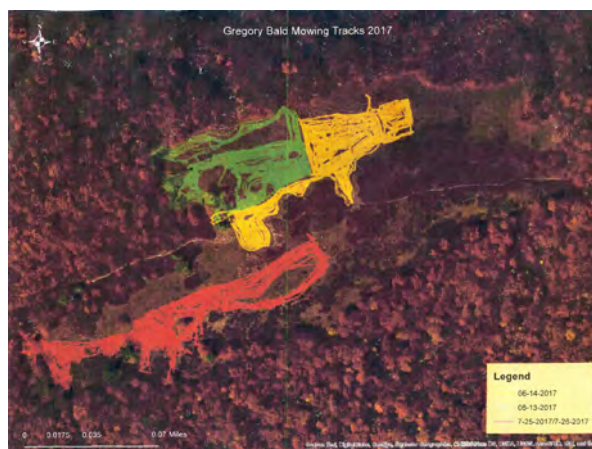
Dear Ms. Sauer,

Thank you very much for the Middle Atlantic Chapter's donation of \$2500 in support of our work to preserve the habitat of four species of hybridizing azaleas unique to Gregory Bald. This donation is very important to our work, and we look forward [to] the American Rhododendron Society's visits to the bald. Our budget officer Debbie Gilbreath set up a special account so the funds can be tracked separately from other donations. The funds will be primarily used to fund intern's work, but we also will use it for replacement parts for the mower and brush cutters and camp equipment. This year we began tracking the mower using GPS and documented so far more than 18 miles of mowing! Our first two trips this season have gone very well with great weather and a hard working crew. See attached GPS track map. We will have a final trip in September during which we will have time to focus on clearing individual encroaching tree saplings from around the azaleas on the south side.

We very much appreciate the continued support of ARS!

Sincerely,

(signed) Kristine Johnson, Supervisory Forester



GARDENS OPEN TO NEW MEMBERS - New members are encouraged to visit members' gardens in their area. The officers and board members have agreed to show new members through their gardens if the member will call ahead and arrange a convenient time. Telephone numbers and towns are listed below.

**Memberships and renewals should be sent to our Membership Chairman Jeanne Hammer at 231 N Robinson Dr, Macon, NC 27551.**

Annual membership dues are \$40 per year.

Sandra McDonald, Ph.D., Editor

Mid-Atlantic Rhododendron News and Notes

4302 Chesapeake Ave

Hampton, VA 23669